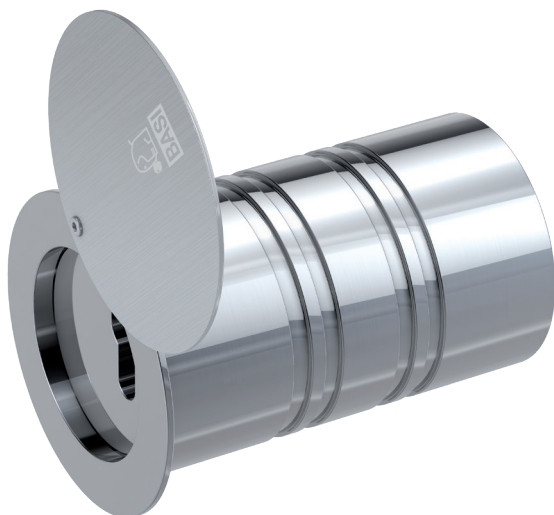


Tube Safe

RT 103 S



Key Safe for wall or floor

Also for keeping smaller valuables safe

Detachable cylinder housing



MOUNTING + OPERATING INSTRUCTIONS



facebook.com/BASIGmbH



[@basi_gmbh](https://www.instagram.com/basi_gmbh)



www.basi.eu

General notes

Follow the instructions in this manual to insert the half cylinder in the right way.

Read the usage and maintenance instructions carefully before installing the half cylinder. Keep the manual with you for future use. If the product is passed on to any third party, include the manual with it.



Warnings: No hazards are to be expected, if the device is used correctly and in accordance with the instructions. Small parts and packaging materials can be swallowed by children and lead to choking! Make sure that small parts and packaging materials do not get into the hands of children. Dispose of the packaging material immediately.

Disclaimer

The manufacturer accepts no liability for damage or injury resulting from incorrect handling.

Scope of delivery

Check that the delivery is complete:

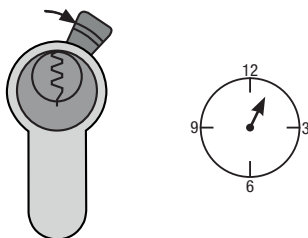
- 1x tube Safe
- 1x grub screw

Additionally required:

- Profile half cylinder (not included in the scope of delivery) 10/30 mm, with 8-way adjustable cam
- Mounting adhesive
- Hexagon screwdriver 2.5 mm

Setting/Assembly the profile half cylinder

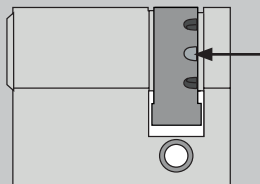
1. Set the cam to 1 o'clock.



Adjust the cam:

The cam is set differently depending on the profile cylinder. One of the following three methods can be used for the most common models:

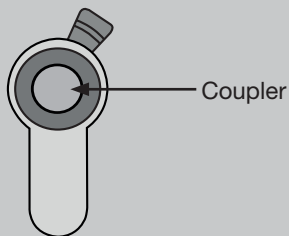
A) Apply pressure to the holes around the cam at the rear edge of the profile cylinder with a sturdy, pointed object so that the cam can be moved to a different position.



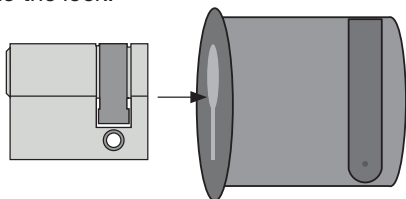
B) Press down the spring in the cam with a sturdy, pointed object and realign the cam.



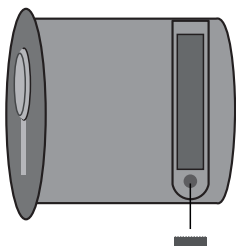
C) Press in the coupler on the back of the profile half cylinder and bring the cam into position.



2. Turn the key until the cam is at 6 o'clock. Insert the profile half cylinder into the lock.



3. Hand-tighten the grub screw with a hexagonal screwdriver.



Assembly Tube Safe

1. Drill a hole with a depth of 140-145 mm and a diameter of 80-85 mm in the wall or floor

Warning: Make sure that no cables or pipes run through the selected drilling point. This can lead to injuries or damage to the surrounding area!



2. Insert the pipe safe, check the dimensions and adjust if necessary.

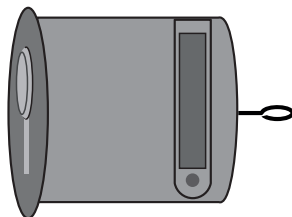
3. Place the pipe safe in the hole in the desired orientation and press the mounting adhesive into the gap between the pipe safe and the core drill wall. Remove any excess mounting adhesive.



4. Apply the installation adhesive according to the instructions on the packaging.

Note

The screw eye can be attached to the back of the lock. It is used to attach keys and other small items using a key ring.



Disposal

Help to protect the environment and dispose of the product and the packaging



materials in accordance with the local regulations.

© Copyright

Reproduction or duplication
(even excerpts thereof) is forbidden
without approval of: BASI GmbH
Konstantinstraße 387
41238 Mönchengladbach, Germany

2025

This publication, including all its parts, is
protected by copyright.

Any use outside the narrow limits of
copyright law without the consent of
BASI GmbH is not allowed and is liable
to prosecution.

This applies in particular to duplications,
translations, microfilming and importing
and processing in electronic systems.

BASI GmbH, Konstantinstraße 387,
41238 Mönchengladbach, Germany